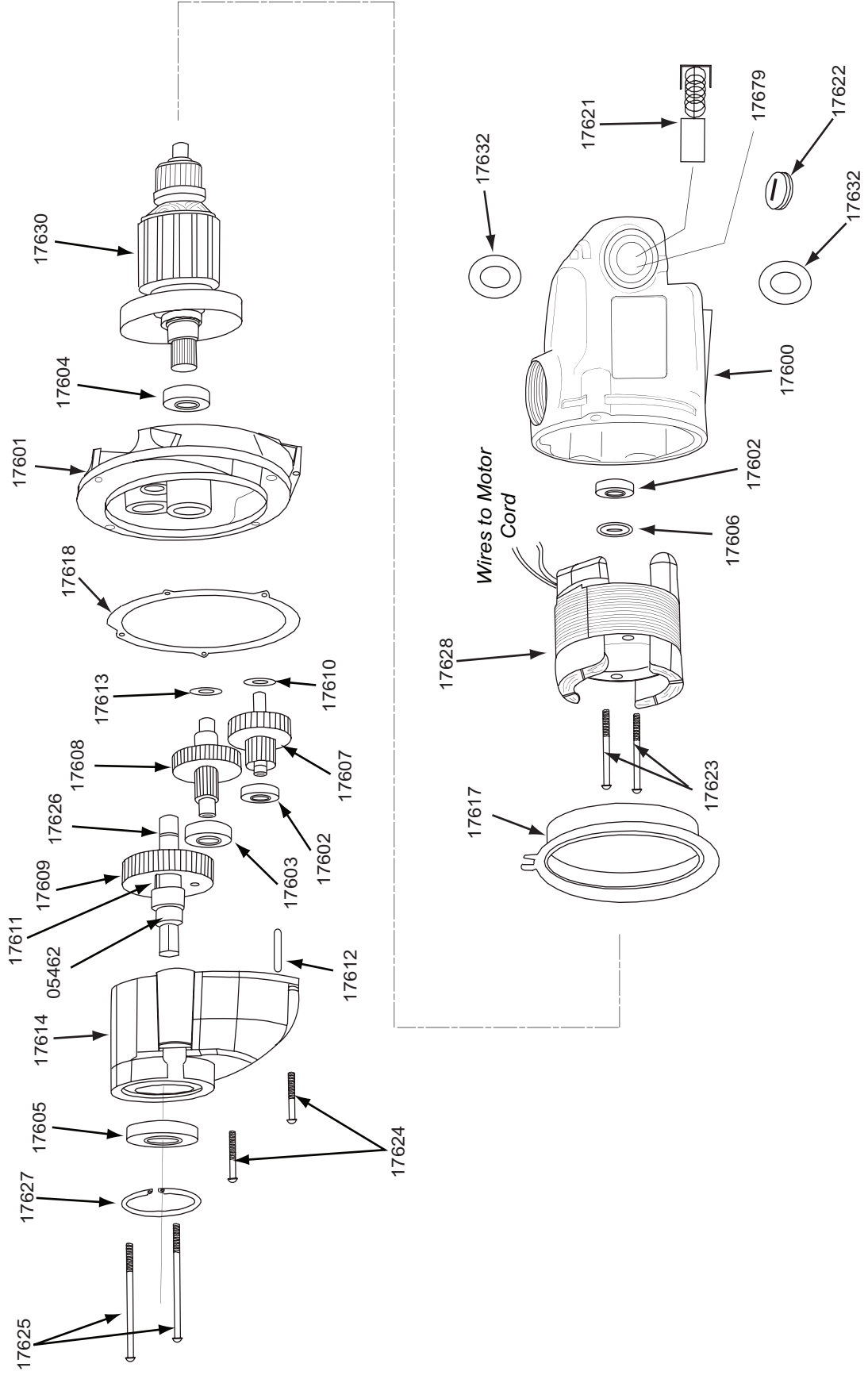
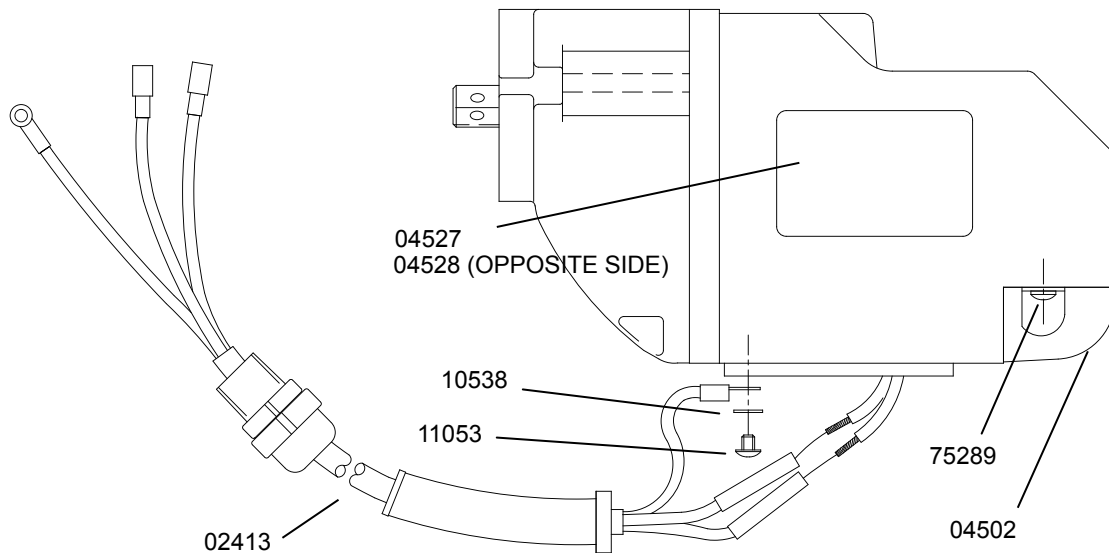


MOTOR PARTS DIAGRAM



MOTOR ASSEMBLY

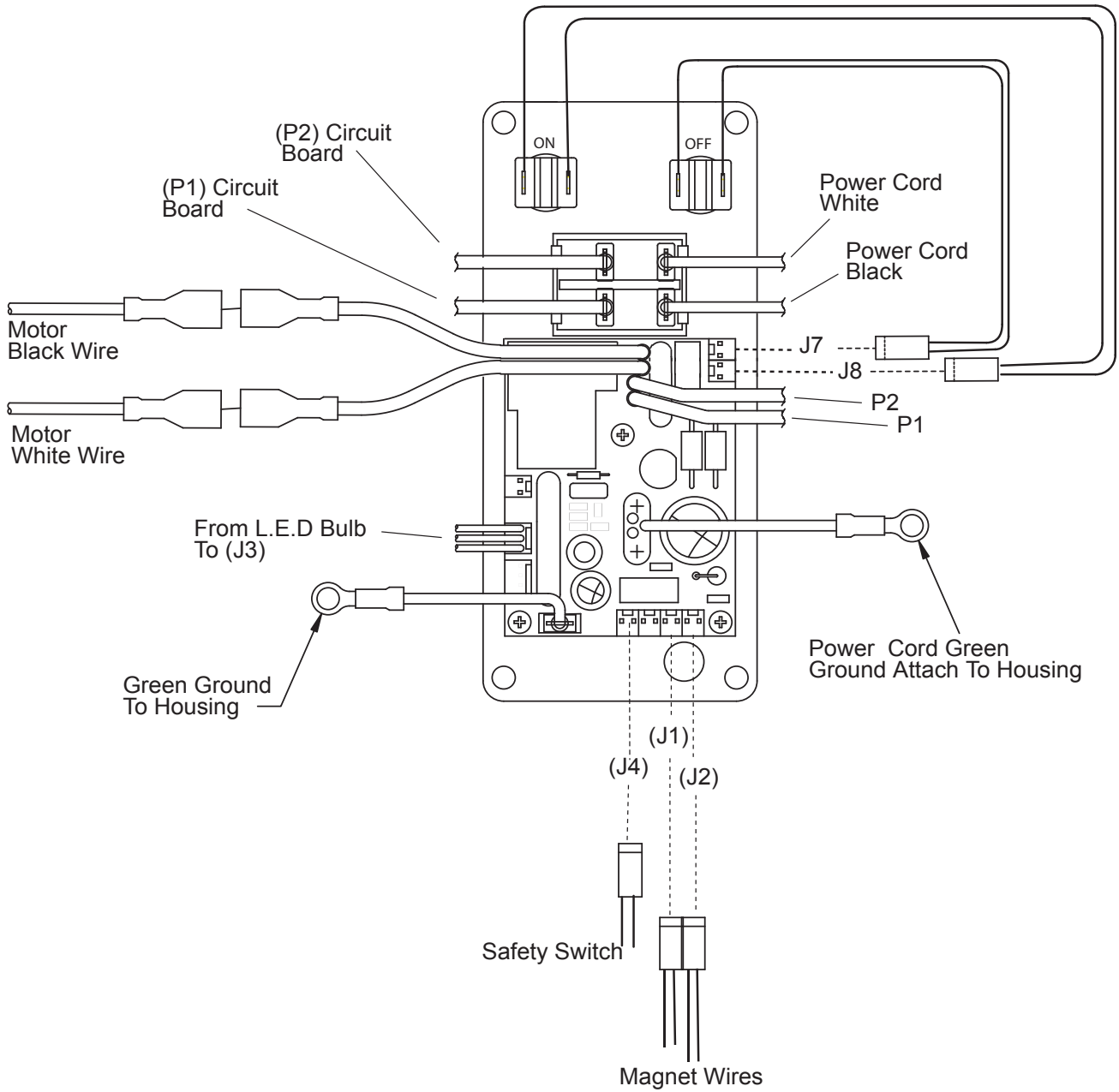


11053 BOLT TORQUE SPECIFICATIONS - TIGHTEN TO 18 IN-LBS
 75289 BOLT TORQUE SPECIFICATIONS - TIGHTEN TO 25 IN-LBS

MOTOR PARTS LIST - 05477

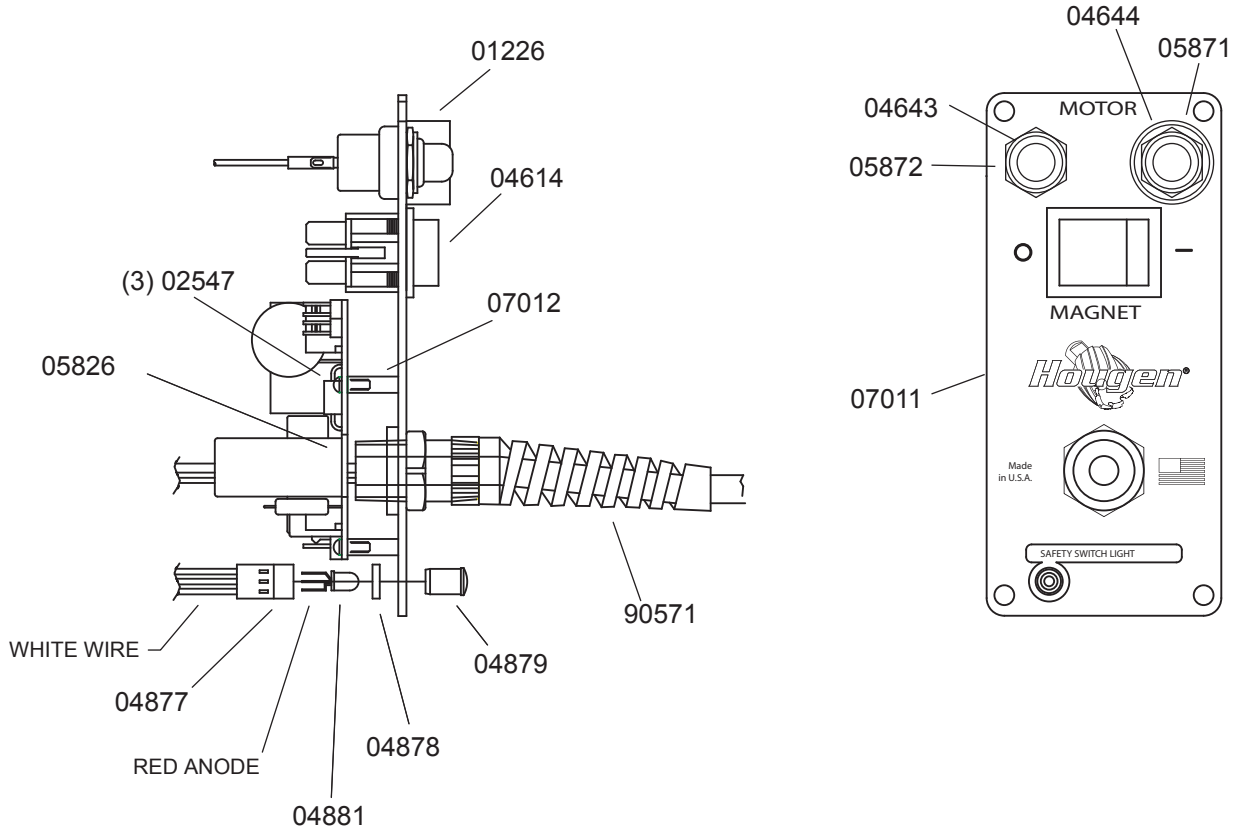
Part #	Description	Qty	Part #	Description	Qty
02413	Motor Cord	1	17611	Key	1
04502	Brush Cover	1	17612	Dowel Pin	1
04527	Label, Motor Specs	1	17613	Flat Washer	1
04528	Label, Motor Safety	1	17614	Gear Housing	1
05462	Spindle	1	17617	Fan Guide	1
10538	Washer #8	1	17618	Gasket	1
11053	Screw BHS #8-32	1	17630	Armature	1
17600	Field Case	1	17628	Field	1
17601	Gear Housing	1	17621	Carbon Brush (Pack of 2)	1
17602	Ball Bearing	2	17622	Brush Cap	2
17603	Ball Bearing	1	17623	Pan Head Screw	2
17604	Ball Bearing	1	17624	Pan Head Screw Short	2
17605	Ball Bearing	1	17625	Pan Head Screw Long	2
17606	Dust Seal	1	17626	Retaining Ring	1
17607	1st Inter. Gear Assy	1	17627	Retaining Ring	1
17608	2nd Inter. Gear Assy	1	17632	Paper Washer	2
17609	Spur Gear	1	17679	Brush Holder	2
17610	Flat Washer	1	75289	Pan Head Screw	2

CONTROL PANEL HOOKUP



CONTROL PANEL PARTS LIST

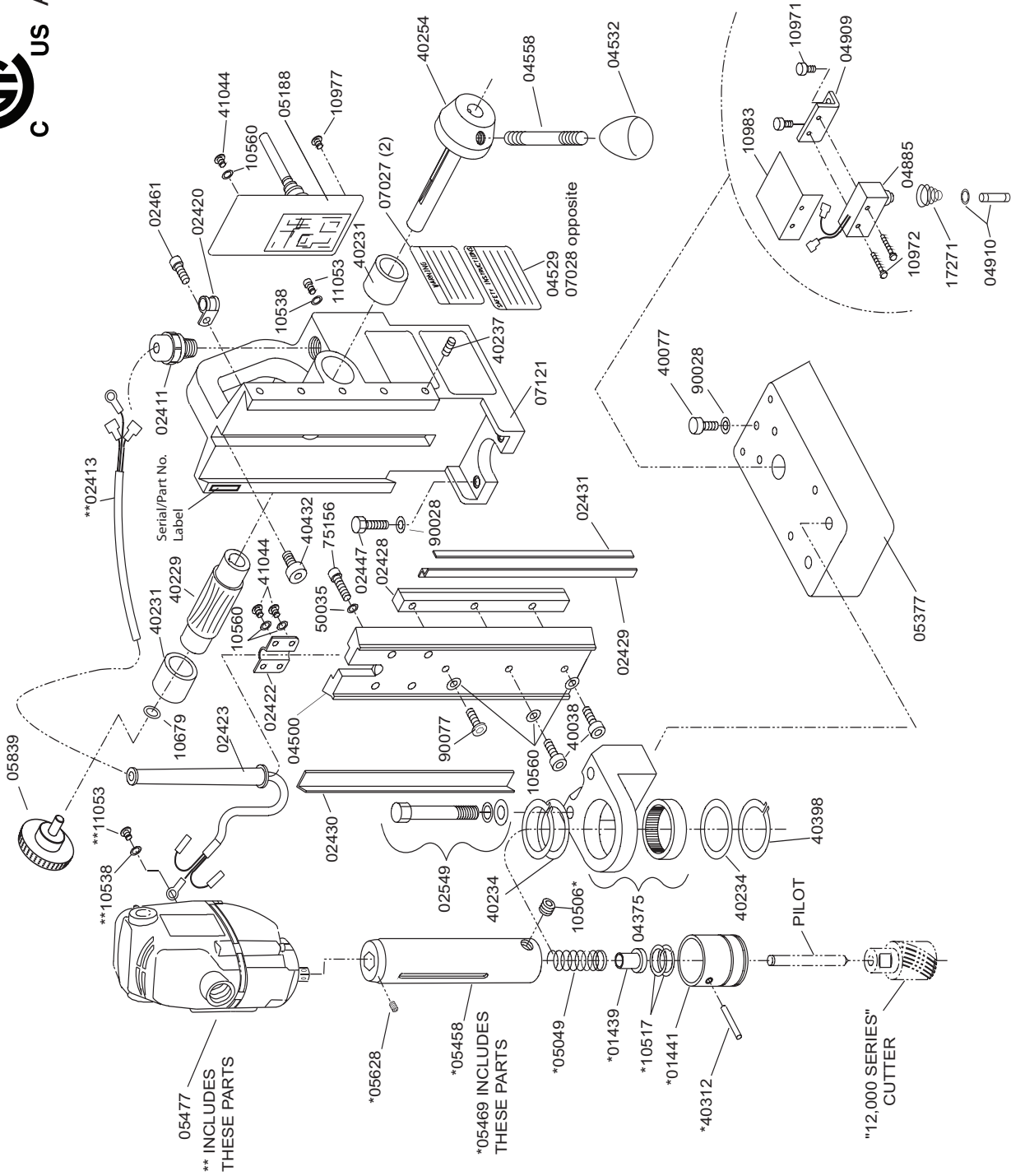
Panel Assembly P/N 05188



NOTE: WHEN INSERTING L.E.D. DETAIL#5 INTO
 HARNESS DETAIL#2 MAKE SURE FLAT ON BULB
 LINES UP WITH WHITE WIRE ON HARNESS.

Part #	Description	Qty.	Part #	Description	Qty.
01226	Switch Guard	1	05826	Circuit Board	1
02547	#4-40 x 5/16 Screw	3	05871	Motor ON Switch	1
04614	Magnet Switch	1	05872	Motor OFF Switch	1
04643	Red Switch Cover	1	*05205	Green Wire Assembly	1
04644	Green Switch Cover	1	07011	Faceplate	1
04877	Wire Harness	1	07012	Stand-Off 3/16 x 9/16 LG	3
04878	Spacer	1	90571	Power Cord	1
04879	Clear Lens	1	*90690	Cable Tie	1
04881	Bulb L.E.D	1		*not shown	

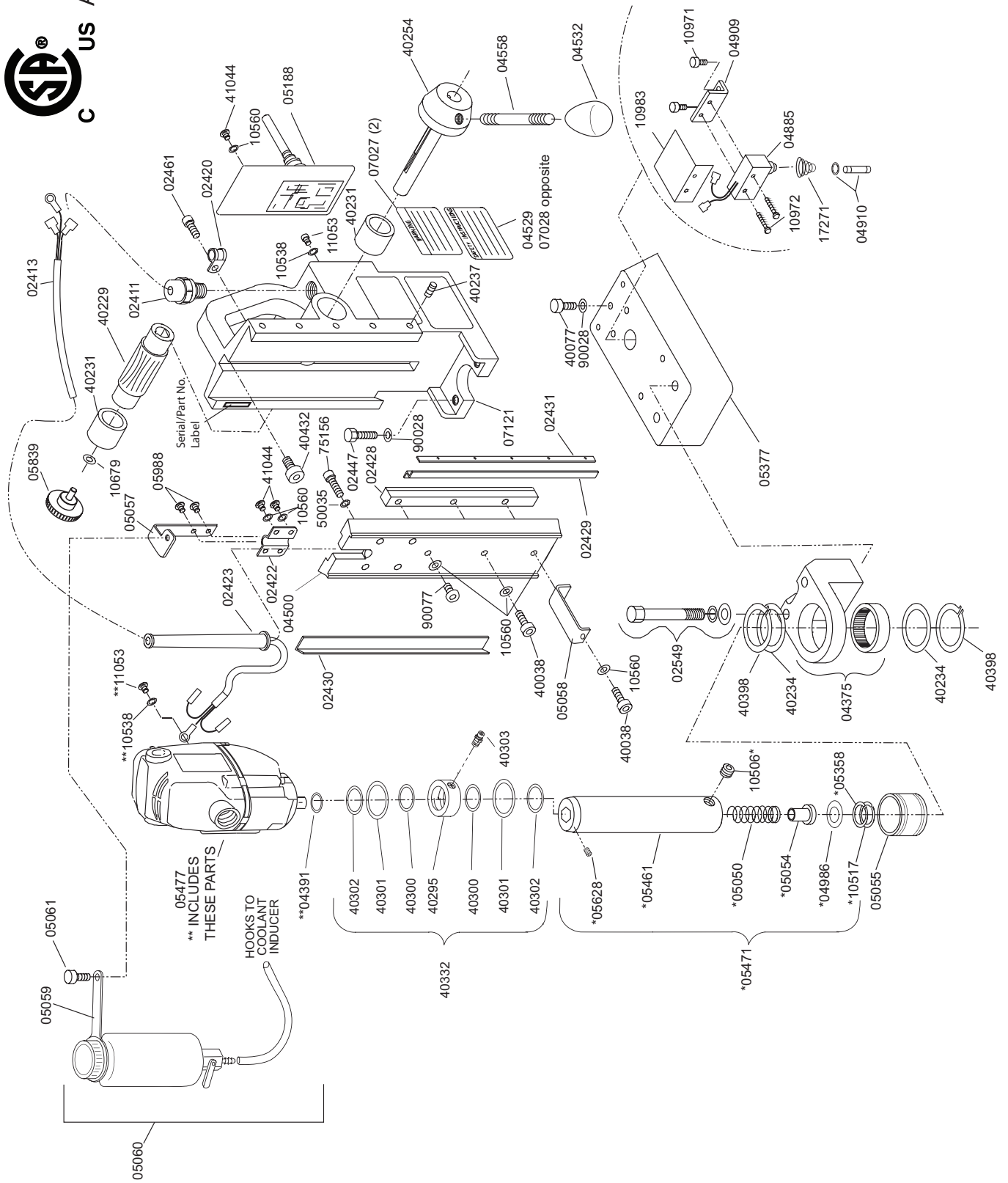
MODEL HMD904 EXPLODED DIAGRAM



HMD904 PARTS LIST

Part #	Description	Qty	Part #	Description	Qty
02411	Strain Relief-Motor Cord	1	40234	Thrust Washer	2
02413	Motor Cord	1	40254	Hub Assy	1
02420	Motor Cord Clamp	1	40398	Retaining Ring	1
02421	Glide Post Spring	2	40432	Screw SHC 1/4-28	1
02422	Motor Cord Bracket	1	41044	Screw BHC #10-32	6
02423	Motor Cord Flex Prot.	1	50035	Lock Washer 1/4 Ext	4
02428	Rack Gear	1	90028	Lock Washer 1/4 Heli	3
02429	Brass Gib - Right	1	90052	Lock Washer #6 Ext	1
02430	Brass Gib - Left	1	90077	Screw BHC #10-32 x 1/2	1
02431	Steel Gib	1			
02447	Bolt-Hex Head 1/4-28	2		Assemblies	
02461	Screw BHC 1/4-20 x 3/8	2	05477	Motor Assy	
04375	Front Support Bracket	1	07121	Housing Assy	
04500	Motor Mount Slide	1	04529	Safety Label	1
04532	Feed Handle Knob	3	07028	Warning Label Chain CSA	1
04558	Feed Handle	3	07027	Warning Label CSA	2
04885	Safety Switch Assy	1	40231	Bronze Bushing	2
04909	Safety Switch Bracket	1	40229	Feed Gear	1
04910	Plunger Assy	1	40237	Gib Screws	5
05377	Magnet	1	05469	Arbor Assembly	
05839	Knob	1	01441	Ejector Spring	1
10538	Lock Washer	1	01439	Seat Spring	1
10560	Lock Washer	11	05049	Arbor Spring	1
10679	1/4" Flat Washer	1	05458	Arbor Body	1
10971	Screw SHC 1/4-20	2	05628	Set Screws	2
10972	Screw BHC #6-32	2	10506	SCR-Set 3/8-24 SPL	2
10973	Nut	2	10517	Retaining Ring	2
10977	Screw BHC 1/4-20	1	40312	Roll Pin Altered	1
10983	Safety Switch Shield	1	02549	Bolt Kit Assembly	
11053	Screw BHC #8-32	1	02460	Bolt Hex 3/8-24 x 2-3/4	2
17271	Taper Spring	1	40391	Lock Washer 3/8 Heli	2
40038	Screw SHC #10-32	2	40392	Washer Flat 3/8	2
40077	Screw SHC 1/4-20	1	05188	Control Panel Assy	
40214	Screw SHC #6-32	1			

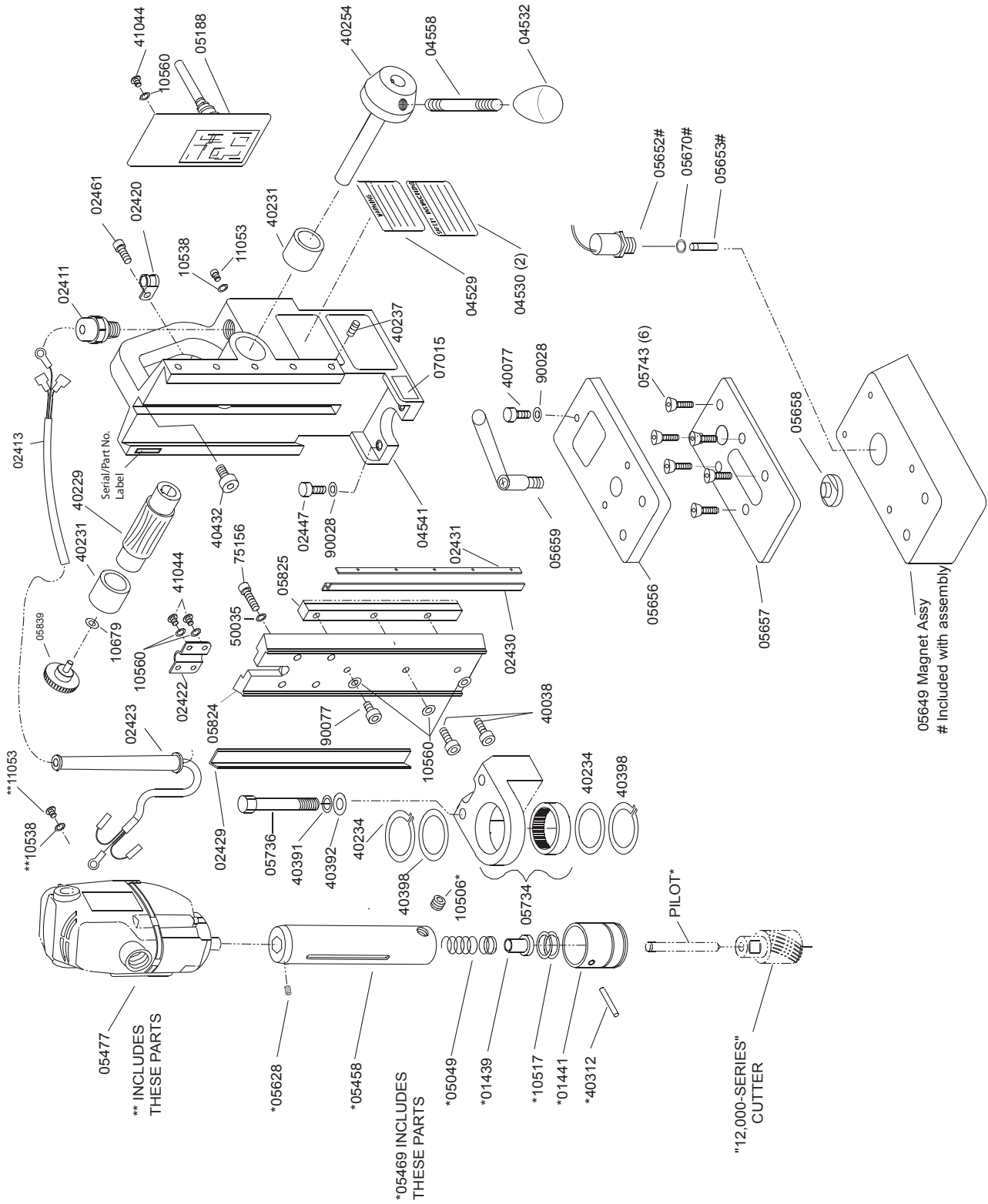
MODEL HMD904C EXPLODED DIAGRAM



HMD904C PARTS LIST

Part #	Description	Qty	Part #	Description	Qty
02411	Strain Relief-Motor Cord	1	90028	Lock Washer 1/4 Heli	3
02413	Motor Cord	1	90052	Lock Washer #6 Ext	1
02420	Motor Cord Clamp	1	90077	Screw BHC #10-32 x 1/2	1
02422	Motor Cord Bracket	1		Assemblies	
02423	Motor Cord Flex Prot.	1	05477	Motor Assy	
02428	Rack Gear	1	07121	Housing Assembly	
02429	Brass Gib - Right	1	04529	Safety Label	1
02430	Brass Gib - Left	1	07028	Warning Label CSA	1
02431	Steel Gib	1	07027	Warning Label Chain CSA	2
02447	Bolt-Hex Head 1/4-28	2	40231	Bronze Bushing	2
02461	Screw BHC 1/4-20 x 3/8	2	40229	Feed Gear	1
04375	Front Support Bracket	1	40237	Gib Screws	5
04500	Motor Mount Slide	1	05471	Arbor Assembly	
04532	Feed Handle Knob	3	05050	Spring Compression	1
04558	Feed Handle	3	05054	Seat Spring	1
04885	Safety Switch Assy	1	05461	Arbor Body	1
04909	Safety Switch Bracket	1	05628	Set Screws	2
04910	Plunger Assy	1	04986	Rubber Washer	1
05055	Collar	1	10506	SCR-Set 3/8-24 SPL	2
05377	Magnet	1	10517	Retaining Ring	1
05839	Knob	1	05358	Washer, Shim	1
10538	Lock Washer	1	40332	Inducer Collar Assy.	
10560	Lock Washer	11	40295	Collar Inducer	1
10679	1/4" Flat Washer	1	40300	"O" Rings	2
10971	Screw SHC 1/4-20	2	40302	Ring Retaining	2
10972	Screw BHC #6-32	2	40301	Washer	2
10973	Nut	2	40303	Fitting - Tube	1
10977	Screw BHC 1/4-20	1	05060	Bottle-Coolant Assy.	
10983	Safety Switch Shield	1	05064	Bottle - Round	1
11053	Screw BHC #8-32	1	05059	Holder - Coolant Btl	1
17271	Taper Spring	1	05061	Knob-Thumb Screw	1
40038	Screw SHC #10-32	2	40429	Nut Locking 1/8 NPT	1
40077	Screw SHC 1/4-20	1	04391	"O" Ring	1
40214	Screw SHC #6-32	1	05065	Ball - Valve Assy	1
40234	Thrust Washer	2	05067	Fitting Brass Barb	1
40254	Hub Assembly	1	40304	Tubing - Viny'	1
40398	Retaining Ring	1	05188	Control Panel Assy	1
40432	Screw SHC 1/4-28	1			
41044	Screw BHC #10-32	6			
50035	Lock Washer 1/4 Ext	4			

MODEL HMD904S EXPLODED DIAGRAM



HMD904S PARTS LIST

Part #	Description	Qty	Part #	Description	Qty
02411	Strain Relief-Motor Cord	1	40398	Retaining Ring	1
02413	Motor Cord	1	40432	Screw SHC 1/4-28	1
02420	Motor Cord Clamp	1	41044	Screw BHC #10-32	6
02422	Motor Cord Bracket	1	50035	Lock Washer 1/4 Ext	4
02423	Motor Cord Flex Prot.	1	90028	Lock Washer 1/4 Heli	3
05669	Rack Gear	1	90052	Lock Washer #6 Ext	1
02429	Brass Gib - Right	1	90077	Screw BHC #10-32 x 1/2	1
02430	Brass Gib - Left	1			
02431	Steel Gib	1		Assemblies	
02447	Bolt-Hex Head 1/4-28	2	05649	Magnet Assembly	
02461	Screw BHC 1/4-20 x 3/8	2	05650	Magnet	1
04532	Feed Handle Knob	3	05652	Safety switch Assembly	1
04558	Feed Handle	3	05653	Plunger	1
05656	Swivel Plate	1	05670	Ring, Retaining	1
05657	Slide Plate	1			
05658	Pivot Rod	1	05477	Motor Assy	
05659	Clamp Handle Assembly	1			
05734	Front Support bracket Assy	1	04541	Housing Assy	
05736	Bolt Hex Head 3/8-24 x 2"	2	04529	Safety Label	1
05743	Screw-FHSC 1/4-20 x 3/4	6	04530	Warning Label	2
05824	Motor Mount Slide	1	04553	Warning Label Chain	1
05825	Rack Gear	1	40231	Bronze Bushing	2
05839	Knob	1	40229	Feed Gear	1
10538	Lock Washer	1	40237	Gib Screws	5
10560	Lock Washer	11			
10679	1/4" Flat Washer	1	05469	Arbor Assembly	
10971	Screw SHC 1/4-20	2	01441	Ejector Spring	1
10972	Screw BHC #6-32	2	01439	Seat Spring	1
10973	Nut	2	05049	Arbor Spring	1
10977	Screw BHC 1/4-20	1	05458	Arbor Body	1
10983	Safety Switch Shield	1	05628	Set Screws	2
11053	Screw BHC #8-32	1	10506	SCR-Set 3/8-24 SPL	2
17271	Taper Spring	1	10517	Retaining Ring	2
40038	Screw SHC #10-32	2	40312	Roll Pin Altered	1
40077	Screw SHC 1/4-20	1			
40214	Screw SHC #6-32	1	05188	Control Panel Assy	
40234	Thrust Washer	2			
40254	Hub Assy	1			